



Imagination Library of
Alabama



ALABAMA CAMPAIGN *for* Grade-Level Reading

RECOMMENDATIONS TO GOVERNOR KAY IVEY



ACGLR Framework

Birth to Age Eight Systems

- Alabama First Class Pre-K
- Early Head Start/Head Start & Affordable High-Quality Childcare
- Kindergarten Assessments
- Alabama's Pre-K – 3rd Grade Integrated Approach to Early Learning (P-3)
- High-Quality Literacy Instruction & Professional Learning

Family Engagement

- Alabama First Teacher Home Visiting services
- Adult Education and Literacy Programs
- Parent Liaisons

Health & Well-Being

- Prenatal Care & Childhood Wellness
- Mental Health Awareness
- School Attendance
- Physical Education

Learning Outside the Classroom

- Collaborative Partnerships & Funding
- Before & After School Programs
- Summer Learning

Special Education, ELL & Struggling Readers

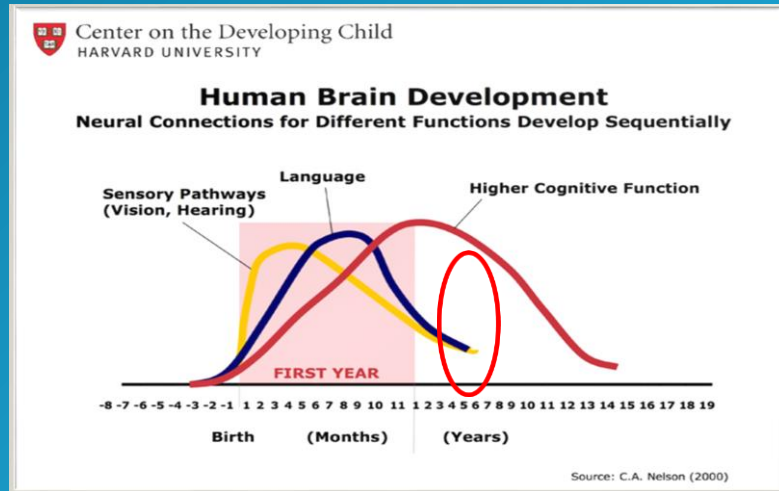
- Early Intervention
- Adaptive & Supportive Technology for Students with Special Needs
- Specialized Training
- Common Language

Alabama Dolly Parton's Imagination Library Launch Video featuring Dolly Parton

[Alabama Statewide Expansion Launch Video](#)

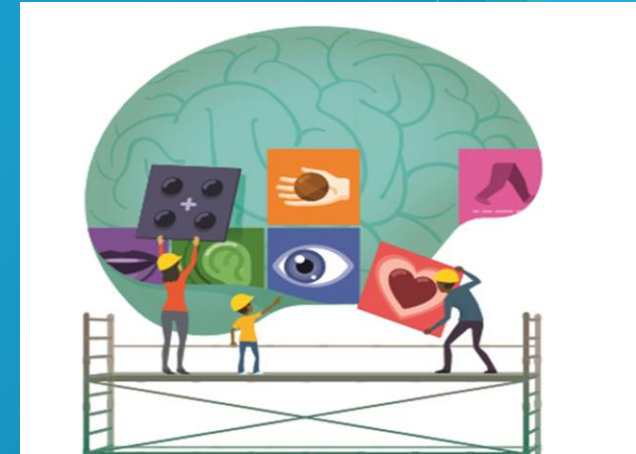
Why it is Important - SCIENCE

Early Experiences Build Brains -
Baby's brain rapidly grows before
entering school with 90% developed
by age 4



If we wait till kindergarten to
introduce a child to books and
reading – It is too late

Brain Science tell us the
Reading Network in children's
brains doesn't naturally exist; it
must be built



It is built by interactive reading
Reading at home requires books...
and that's where we come in!

Why it Matters - IMPACT

Home Literacy Environment

Families connect around book

Increase reading 3 times a week from 59.7% to 85.2%, increased reading multiple times in the same day

Build home library (60)

All family members engaged in reading

Increased 1:1 time, laying foundation for adult's consistent involvement in their children's learning and development.

Kindergarten Readiness

28.9% increase in readiness for Kindergarten

3rd Grade Reading and beyond

Significantly stronger reading, math, science achievement tests consistently from Kindergarten through 9th.

Community

A healing effect manifesting in emerging neighborhood initiatives, increased library usage and literacy focus.

Ties to Adult Literacy / Dual Language Learner Programs

Creates a shared bond among children, especially important when starting kindergarten

Family

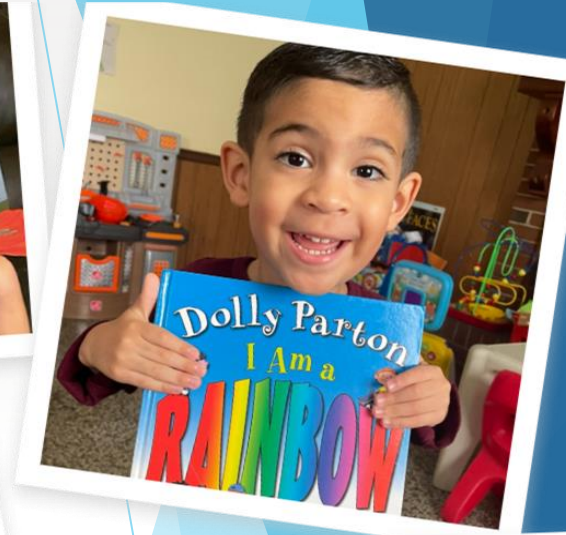
Establishment of reading routines brings about increased stability, emotional well-being and improved atmosphere in families.

Research shows greatest impact in families facing difficulties (such as poverty, illness and stress experienced by separated families).

Why It Matters - LOVE

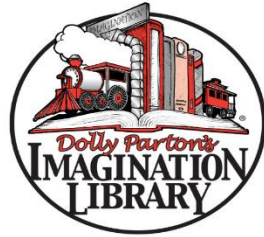
- ◆ Books delivered to the home creates a “event”
- ◆ Snuggling, sharing and interaction
- ◆ Reading together helps to create a bond, a unique, shared experience
- ◆ Provides connection between child and caregiver(s), other family members, siblings
- ◆ Sense of ownership and pride - books belong to the child
- ◆ Frequency - happens every month

Strengthens the home environment. Supports natural tendencies of the family - parents want their children to be healthy and happy.



Personal Impact of Imagination Library





“YOU CAN NEVER GET ENOUGH
BOOKS
INTO THE HANDS
OF ENOUGH
CHILDREN”
Dolly



INSPIRE A LOVE OF READING IN ALABAMA

Enroll your child in The Imagination Library of Alabama and get a FREE BOOK every month until their 5th birthday.

“ Our daughter **LOVES READING** and being read to, and the **VARIETY** she receives from the Imagination Library is a **SIGNIFICANT** part of this ”

Dolly Parton's Imagination Library is dedicated to inspiring a love of reading by gifting books free of charge to children from birth to age five, through funding shared by Dolly Parton and local community partners in the United States, United Kingdom, Canada, Australia and Republic of Ireland.



Alabama Department of Early Childhood
Education
445 Dexter Ave. Suite 2050
Montgomery, AL 36104
children.alabama.gov | bornready.org

IMAGINATIONLIBRARY.COM/



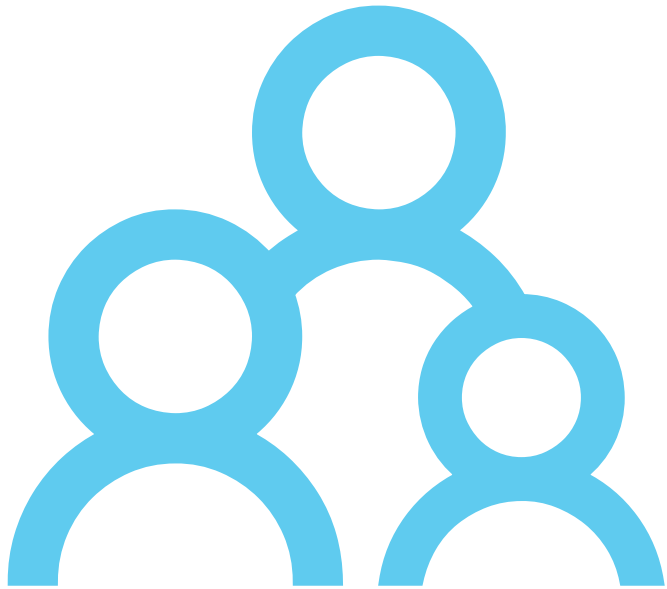
Are you interested in starting an Imagination Library program in your community?

- Kahla Williams
- Regional Director, The Dollywood Foundation
- Cell 336-389-2775
- Email kwilliams@imaginationlibrary.com

Other Strategies Used to Improve 3rd-grade reading proficiency in Alabama



- Lena Start Program
- Born Ready University - Birth to five parenting courses expansion to 40 more counties
- Reach Out and Read-Books(5 counties) distribution through pediatrician offices
- Campaign for Grade-Level Reading Expansion to 52 more counties
- First 10 Communities-alignment of Elementary, Early Education, Parents, and the Community efforts for children to show up to Kindergarten ready for school



Family Resources that can help
with /literacy needs

Alabama Community College
System, Adult Education, ESL, and
Family Literacy programs

Alabama Family Central -
<https://alabamafamilycentral.org/>

Parent Assistance Line- Text PAL to
274448

United Way 211- call 211

Local Family Resource Centers

Thank you!

Liletta Jenkins, MS

Director of Community Outreach
and Engagement

Campaign for Grade Level Reading
State Lead

liletta.jenkins@ece.alabama.gov

334-328-2562

