

# ACCESSING SUPPORTS FOR INDIVIDUALS WITH DISABILITIES

May 2021

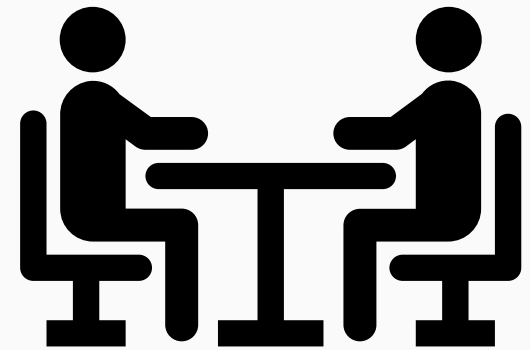


# **Supports and Services**

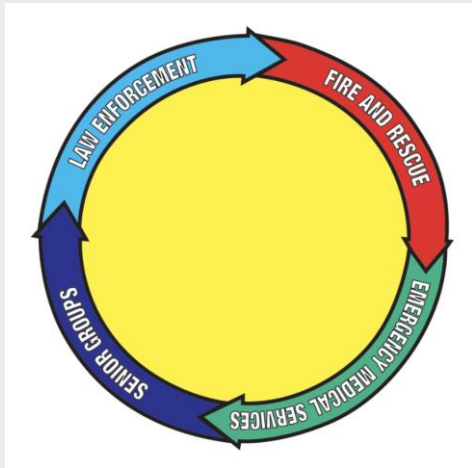
- **Advocacy**
- **Safety**
- **Behavior**
- **Parent education**
- **Recreation**
- **The law**
- **Medical/Mental Health**
- **Other needs**

# ADVOCACY

- Advocacy for your child
- Self Advocacy
- Choice and Preference
- Self Identification
- Transition Services – Hispanic cultural differences
- Guardianship – legal proceedings



# Safety



- **Project Lifesaver**
- **Yellow Dot Program**
- **First Responder Training**
- **If I Need Help**
- **Preparing for Disaster for People with Disabilities and other Special Needs**
- **Service Dogs Alabama**

# Behavior

- The purpose (function of behavior)
- Behavior IS Communication!
- Learning the principles of Applied Behavior Analysis
- Positive Behavior Interventions and Supports (PBIS)

## *4 Functions of Behaviour*

**Attention**

**Escape**

**Access to  
Tangibles**

**Sensory**

# PARENT EDUCATION



- **Learn about your child's disability**
- **Development – Milestones**
- **Networking – Support Groups**
- **Alabama Parent Education Center**
- **Respite**
- **Alabama Department of Rehabilitation Services (CRS / VR)**
- **Evidence Based Practices**

# RECREATION



- **Therapeutic programs**
- **Special Olympics**
- **Miracle League**
- **Equestrian programs**
- **Adaptive Sports (swimming, tennis)**
- **Summer Camps**

# THE LAW



- **Alabama Disabilities Advocacy Program (ADAP) – Free Services**
- **Special Education is a Right, Not a Favor!**
- **Individuals with Disabilities Education Act (IDEA)**
- **Free Appropriate Public Education**
- **The IEP/504 plan and interpreters**
- **IEP Facilitators – Free Service**
- **Alabama Special Education Services (ALSDE)**



# MEDICAL / MENTAL



- **Wrap-Around Services**
- **Medical Specialists**
- **Neurologist**
- **Diagnostic Clinicians**
- **Psychologists**
- **Psychiatrics**
- **Residential (Mental Crisis)**

# OTHER NEEDS



- Food Assistance, Clothing, Transportation
- Emergency Housing, Utility Assistance
- Insurance Coverage, Funding
- Legal (Immigration, Custody, Domestic Violence)
- Faith Based Organizations
- Limited English Proficiency

# **State Organizations**

- **Alabama Council on Developmental Disabilities**
- **Alabama Department of Mental Health**
- **Alabama Medicaid Agency**
- **Early Intervention**
- **Help Me Grow Alabama**
- **Family Voices Of Alabama**
- **The Arc of Alabama**
- **Alabama Institute for the Deaf and the Blind**
- **211 Connects Alabama**
- **People First of Alabama**
- **HICA**



### WHO WE SERVE:

Alabama's RAN serves those who have questions, concerns, or resource needs regarding themselves, a family member, friend, client, patient, or a student with diagnosed or suspected Autism Spectrum Disorder (ASD).

### WHAT WE DO:

- ☐ Professional training programs
- ☐ Technical assistance and consultation services
- ☐ Individual and direct family assistance in the home, community, and school
- ☐ Public education programs

### WHO WE ARE:

Alabama's RAN is staffed by experts in the field of Autism Spectrum Disorder. Each RAN strives to connect people with ASD, their families, educators, and service providers to the information and/or services that best meet their needs.

### CONTACT US:

Region I—University of Alabama in Huntsville    256-824-5700  
[uahran@uah.edu](mailto:uahran@uah.edu)

Region II—University of Alabama    205-348-3131  
[ua-ran@ua.edu](mailto:ua-ran@ua.edu)

Region III—University of South Alabama    251-410-4533  
[isaran@health.southalabama.edu](mailto:isaran@health.southalabama.edu)

Region IV—Auburn University    334-844-2004  
[auran@auburn.edu](mailto:auran@auburn.edu)

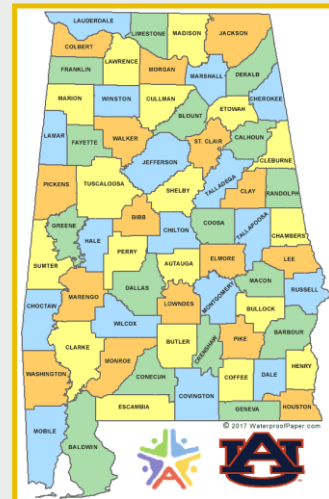
Region V—University of Alabama at Birmingham    205-934-1112  
[uabran@uab.edu](mailto:uabran@uab.edu)





## WHO WE SERVE:

Alabama's Hispanic Training and Resource Advocacy Network (HTRAN) serves those who have questions, concerns, training, or resource needs regarding themselves, a family member, friend, client, patient, or a student with diagnosed or suspected Intellectual and/or Developmental Disability I/DD.



## WHAT WE DO:

- Training for Families and Professionals
- Technical Assistance and Consultation Services
- Individual assistance for Hispanic families (in the home, community, and school)
- Public education and awareness programs

## WHO WE ARE:

Alabama's Hispanic Training and Resource Advocacy Network is staffed by experts in the field of Intellectual and Developmental Disability (I/DD). Each HTRAN strives to connect Hispanic individuals with I/DD, their families, educators, and service providers to the information and/or services that best meet their needs.

## CONTACT US:

- Doris Hill, PhD, BCBA-D, LBA  
[hilldol@auburn.edu](mailto:hilldol@auburn.edu)  
334-844-2004
- Christine Drew, PhD, BCBA-D  
[cmd0109@auburn.edu](mailto:cmd0109@auburn.edu)  
334-844-7676
- Maria Gutierrez, Parent Mentor  
[mtg0039@auburn.edu](mailto:mtg0039@auburn.edu)  
334- 844-7648

*This program was partially funded through a grant from the Alabama Council on Developmental Disabilities (ACDD) provided under the Developmental Disabilities Assistance and Bill of Rights Act of 2000 (106-402).*

# ADMH AUTISM SERVICES



## **Intensive Care Coordination:**

Identification, coordination, and monitoring of an array of supports through needs assessment, case planning, service arrangement, social support, re-assessment, and follow-up/monitoring by a single case manager.



## **Behavior Support:**

Development and monitoring of a behavior support plan designed to diminish, extinguish, or improve specific behaviors. The behavior therapist coordinates and trains others to implement the plan as well as provide crisis management.



## **Therapeutic Mentoring:**

Support, coaching, and training for an individual in age-appropriate behaviors, interpersonal communication, problem solving, conflict resolution, and relating appropriately to peers and adults.



## **In-Home Therapy:**

Treatment of the individual's behavioral and mental health needs, to include effective support to enhance the family's ability to improve the individual's functioning in the home and community.



## **Peer Support:**

Promotion of socialization, self-advocacy, development of natural supports, and maintenance of community living skills. Peer specialists encourage participation in service planning, engaging supports, improving self-management, decision making, and navigating child-serving agencies.



## **Psychoeducational Services:**

Training to help individuals and families understand nature of diagnosis and effective strategies to maintain meaningful engagement in the community.



For Medicaid-eligible children and youth with autism  
ages birth through 20 that require more intensive supports

1-800-499-1816 | [autism.dmh@mh.alabama.gov](mailto:autism.dmh@mh.alabama.gov) | [www.mh.alabama.gov/autism-services](http://www.mh.alabama.gov/autism-services)



## CONTACT INFORMATION

MARIA GUTIERREZ

[MTG0039@AUBURN.EDU](mailto:MTG0039@AUBURN.EDU)

DORIS HILL

[HILLDOL@AUBURN.EDU](mailto:HILLDOL@AUBURN.EDU)

[AURAN@AUBURN.EDU](mailto:AURAN@AUBURN.EDU)



# QUESTIONS?

May 2021

